

# DIRECTIONS FOR USE

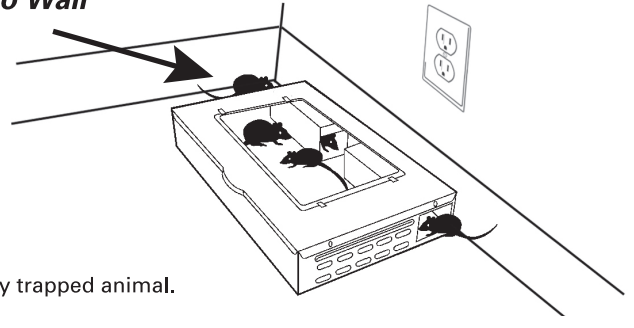
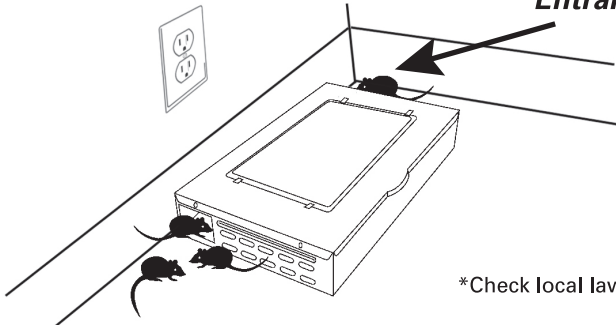
Handle trap with care. Edges may be sharp.



- For safety, wear gloves when handling trap.
- Place the JT EATON™ REPEATER or LITTLE PETE™ Multiple Catch Mouse Trap lengthwise against a wall or object. Make sure the entrance holes are closest to that wall or object. Baiting is not necessary. A small piece of cotton with a scent attractant, (artificial Vanilla or Almond extract work well), placed on inside center of trap may help catch mice sooner.
- Submerge the JT EATON™ REPEATER or LITTLE PETE™ Multiple Catch Mouse Trap in water for quick disposal of trapped rodents or \*release them. The hinged cover allows for easy clean-up. Completely reusable. Check trap REGULARLY.
- Elevate device as needed up to 2 inches in area where water may gather on floor or surface.
- If device is moved from original placement location upon your return, reposition trap as noted above or select a new location to minimize trap movement. Secure with cable ties, wire, glue or other methods appropriate for location if necessary.
- All three styles of traps allow for the use of glue boards that fit in between the ramps and the outside edge of the trap (JT EATON™ No. 166), that are made specifically for this style of trap. An unglued section where the mice enter helps prevent the mice from jamming the entrance to inside trap area.
- Trap ramp modules can be removed to allow trap to be used with larger glue trap or glue board if necessary. Use caution when removing ramp module to avoid damaging module.

Be sure to look at the NEW JT EATON™ SPEEDY CLEAN™ Mouse Traps. Ramps remove without tools for Speedy Cleaning of trap at [www.jteaton.com](http://www.jteaton.com)

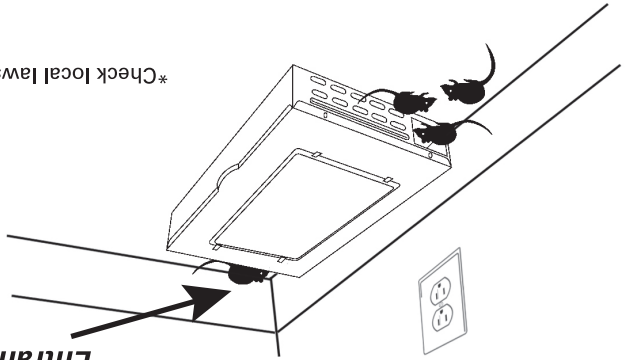
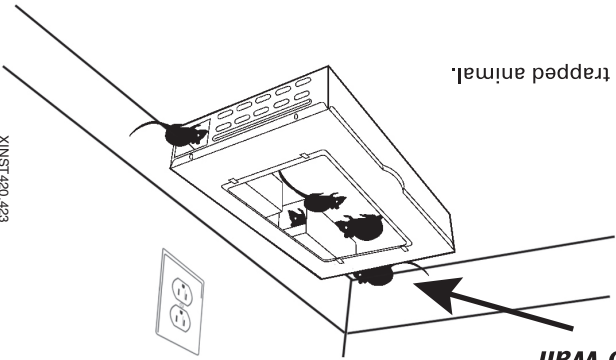
Entrance Side Close To Wall



\*Check local laws before releasing any trapped animal.

XINST420.423

Entrance Side Close To Wall



\*Check local laws before releasing any trapped animal.

XINST420.423

Be sure to look at the NEW JT EATON™ SPEEDY CLEAN™ Mouse Traps. Ramps remove without tools for Speedy Cleaning of trap at [www.jteaton.com](http://www.jteaton.com)

- For safety, wear gloves when handling trap.
- Place the JT EATON™ REPEATER or LITTLE PETE™ Multiple Catch Mouse Trap lengthwise against a wall or object. Make sure the entrance holes are closest to that wall or object. Baiting is not necessary. A small piece of cotton with a scent attractant, (artificial Vanilla or Almond extract work well), placed on inside center of trap may help catch mice sooner.
- Submerge the JT EATON™ REPEATER or LITTLE PETE™ Multiple Catch Mouse Trap in water for quick disposal of trapped rodents or \*release them. The hinged cover allows for easy clean-up. Completely reusable. Check trap REGULARLY.
- Elevate device as needed up to 2 inches in area where water may gather on floor or surface.
- If device is moved from original placement location upon your return, reposition trap as noted above or select a new location to minimize trap movement. Secure with cable ties, wire, glue or other methods appropriate for location if necessary.
- All three styles of traps allow for the use of glue boards that fit in between the ramps and the outside edge of the trap (JT EATON™ No. 166), that are made specifically for this style of trap. An unglued section where the mice enter helps prevent the mice from jamming the entrance to inside trap area.
- Trap ramp modules can be removed to allow trap to be used with larger glue trap or glue board if necessary. Use caution when removing ramp module to avoid damaging module.

Multiple Catch Mouse Trap



# DIRECTIONS FOR USE

Handle trap with care. Edges may be sharp.